

WILLETTON PRIMARY SCHOOL



Willetton
Primary School

TERM 3 PLAN 2020

WILLETTON PRIMARY SCHOOL

MESSAGE FROM THE PRINCIPAL

Western Australia's COVID-19 restrictions have been relaxed even further, as WA's roadmap is updated to complete the removal of all restrictions.

The WA roadmap has been developed in conjunction with the National Cabinet principles and is based on the best health advice for WA.

Depending on infection rates locally, Phase 5 is planned to be introduced on Saturday, 18 July (effective from 11.59pm Friday, 17 July) and will result in the removal of the 2 square metre rule which coincides with the commencement of Term 3.

Some things that changed due to COVID-19 will continue because it has sharpened the focus, outcomes, engagement and communication for our students. Other activities, events and processes will be reengaged because they are of significance to our school culture, traditions and connection with our community.

From a personal perspective there are some things that changed that have also sharpened my focus and really reminded me of 'why I love what I do'.

I have gained immensely from a few little things such as, greeting our gorgeous kids every morning and farewelling them at the end of each day at the Kiss & Drive, the lovely waves hello and good bye and knowing which child belongs to which car!! I have loved the opportunity of visiting every classroom following virtual assemblies to personally present merit awards and values certificates. It has been so lovely to talk to each child about the comment on their award. I will miss this part of assemblies.

Another positive to have come out of the crisis has been the wonderful support and responsiveness we have received from our community.

The results of your feedback from the 'Reflection on Term 2 Policy and Process' Parent Survey, have informed our operational guidelines in this Term Three Plan 2020.

I am looking forward to welcoming parents and visitors back into our school and getting back to more of a community feel in a slightly new way. You will see in the Term Three Plan how everyone is always welcome at WPS and how the safety and wellbeing of our students is paramount. This means that every visitor on to the school grounds may only enter through two access gates and MUST sign in at the Administration Office.

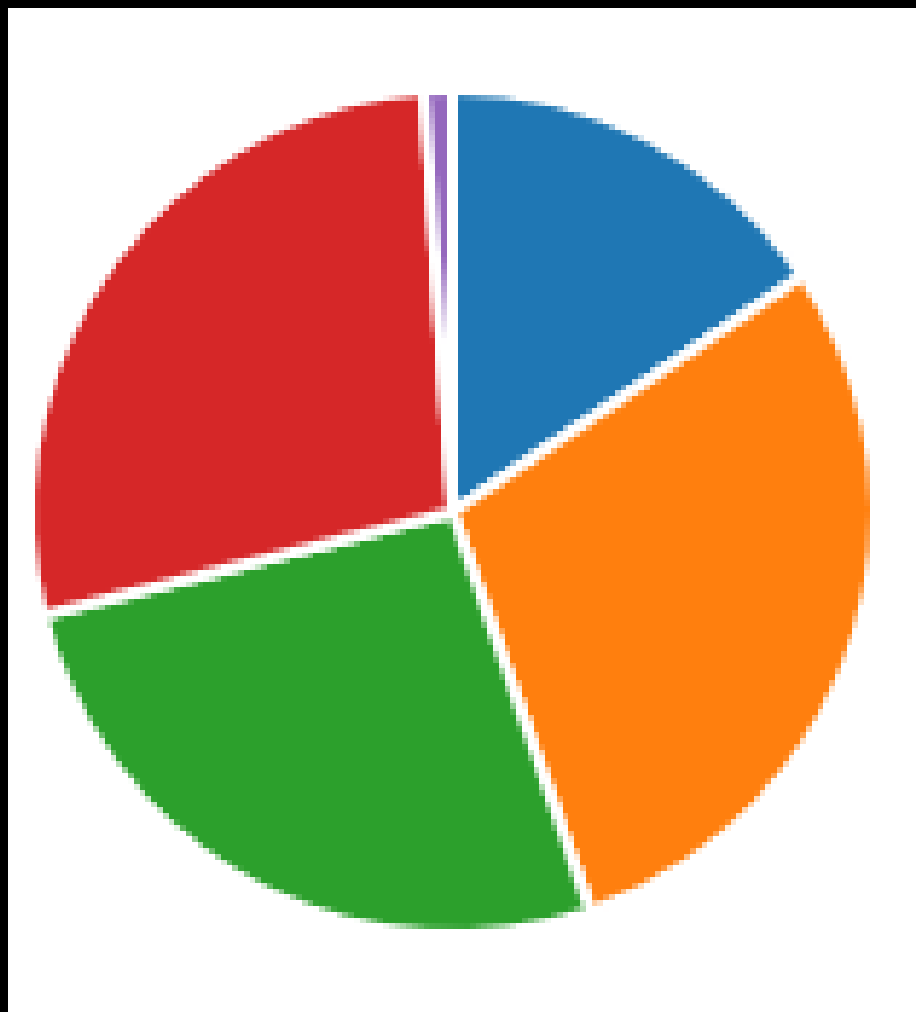
As I look back I am very proud of what our whole school community of students, staff and parents has achieved not only in term two, but over the first semester. Thank you for the ongoing support and care.

Best wishes,

Heather McNeil
Principal

WILLETTON PRIMARY SCHOOL

PARENT SURVEY RESULTS REFLECTION ON TERM 2 POLICY AND PROCESSES



FROM 168 PARENT
RESPONSES...

01



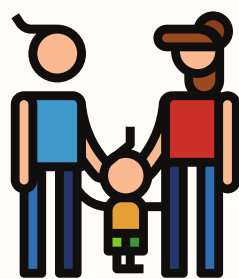
VIRTUAL ASSEMBLIES
42.2% WANT TO KEEP THEM

02



MORNING DROP-OFF
79.7% WANT TO KEEP IT THE SAME

03



AFTERNOON PICK-UP
72.0% WANT TO KEEP IT THE SAME

04

ONLINE COMMUNICATION
76.1% LIKE THE INCREASE

05



BACK TO NORMAL
0.02% DON'T WANT TO KEEP ANY CHANGES

WILLETTON PRIMARY SCHOOL

RETURNING IN TERM 3...



ASSEMBLIES

Assemblies will return to normal. Items will be filmed and loaded to the school website for families to view.



BEFORE SCHOOL SPORT

Before School Sport with Mr Gotti will return. Keep an eye out for the permission slip on Connect.



ONSITE MEETINGS

Onsite meetings will resume such as the School Board, P&C and parent/teacher meetings by appointment.



EXCURSIONS

Students will be allowed to attend school excursions such as AQWA to celebrate National Science Week.



SPORTING EVENTS

Interschool sports and sports carnivals will resume in Term 3 beginning with the cross country.



EDUDANCE

Students in PP to Year 6 will take part in Edudance lessons, culminating in a Week 10 Concert.

WILLETTON PRIMARY SCHOOL

RETURNING IN TERM 3...



CAMP

Year 6 students will participate in a school camp at Dare Adventures in Dwellingup.



COMMUNAL EATING

Students in Years 1-6 will resume eating together during Recess and Lunch across both Undercover Areas.



WATER FOUNTAINS

Students will still require their own drink bottle. Fountains will reopen for students to fill their bottles at.

CLEANING IN TERM 3...

A full-time cleaner will continue to be on site in Term 3, Monday-Friday 7:30am-4:00pm to specifically conduct cleaning that is separate to normal daily cleaning requirements. These following cleaning procedures follow advice from the WA Department of Health and will be at regular intervals throughout the day:

1. Cleaning staff will be on site during the school day to regularly clean and disinfect high-contact surfaces that are frequently used by students and/or staff.
2. Playgrounds are open and play equipment should be cleaned daily.

WILLETTON PRIMARY SCHOOL

The following arrangements will be in place at Willetton Primary School from the commencement of Term 3:

PICK-UP AND DROP-OFF IN TERM 3

DROP-OFF

1. The Kiss & Drive and School Driveway gates will remain open until 8am and 8:20am respectfully
2. Students are to be dropped-off at
 - The Kiss and Drive School Gate, Pinetree Gully Rd (next to Library)
 - Pinetree Gully Rd School Gate (closest to the Junior playground)
 - Pinetree Gully Rd School Gate (closest to the crosswalk)
 - Apsley Rd School Gate
3. Gates will be supervised by a member of staff
4. All gates other than the Kiss and Drive & Driveway will be locked from 8:50am
5. Students arriving late will need to enter through the Kiss & Drive Gate and sign-in at the Admin Office

PICK-UP

1. School gates will be unlocked at 2:30pm
 2. Parents may collect their child/ren from the classroom
- Please Note: Parent/Teacher meetings are available upon request